

CERTIFICATE OF LOCATION OF GOVERNMENT CORNER

EAST QUARTER Corner of Section 17, Township 106, Range 41, 5TH P.M.

STATE OF MINNESOTA, County of MURRAY

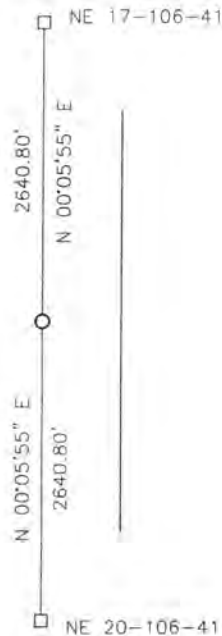
At the corner location shown on the sketch:

On _____ found a _____

left monument as found, lowered monument, removed monument (explain)

On 11-15-2017 placed a SURVEY SPIKE WITH SEAL #50343.

SKETCH OF REFERENCE TIES



Minnesota State Plane Coordinate System Murray County Datum NAD83 (1996)

N: 150231.504
E: 495554.978

Statement of evidence relative to this corner location is on back of page.

I hereby certify that this document and the data contained herein was prepared by me or under my direct supervision.

[Signature] 2/19/18
SIGNATURE DATE

Registration No. 50343

- Land Surveyor, Professional Engineer
- County Surveyor, County Engineer

STATE OF MINNESOTA, } ss.
COUNTY OF MURRAY, }

I hereby certify that the within Instrument was filed in this office for record on the 26TH day of MARCH A.D. 20 18 at 9:00 o'clock A. M, and was duly recorded as Document No. _____

Lucy C. Larson
County Recorder

Statement of Evidence

In 1861, L.G.M. Fletcher did the original subdivision of the township.

On November 15, 2017, Bueltel-Moseng Land Surveying set a survey spike with seal #50343 midway and on line between the section corners.